



Issued 03/01/2019



RALLY & OFFROAD

PRODUCT NEWS

AUTOMOTIVE TTX FLOW

The Öhlins Flow-technology is now available to our customers in the Rally and Rallycross market. With our TTX-technology and patent-pending internal pressure regulation, this new shock is a step forward compared to other shock absorbers. We retained our TTX-technology but redesigned the 'check-valve' system to balance wide valve openings and quick open/close actions to handle a large volume of oil flow.

The Automotive TTX Flow gives the car improved traction, comfort and predictability which enhance the stability of the car. It's also easy to adjust to find the perfect setting for the stage and driving style. The base model comes equipped with a general damping adjuster on the shaft and a low-speed compression adjuster on the cylinder head.

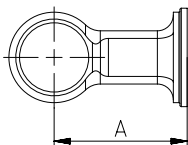
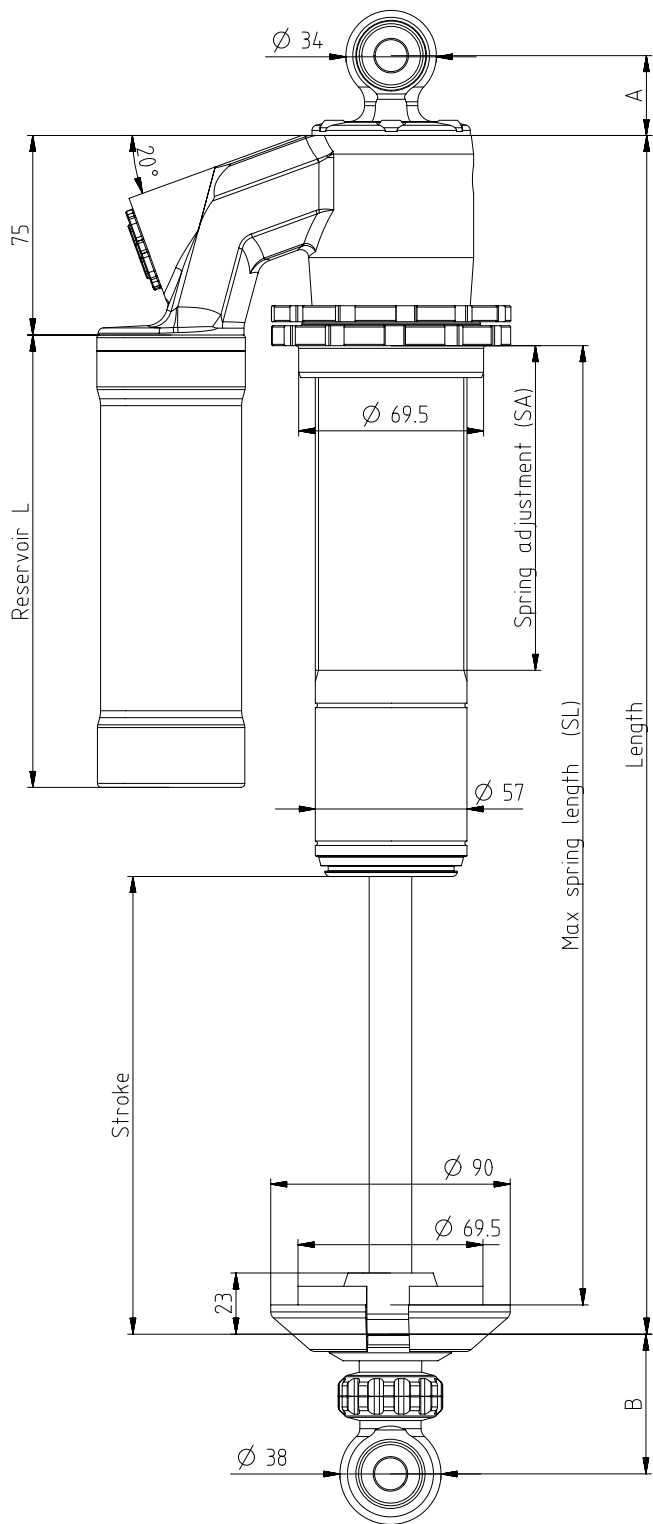
FEATURES

- > TTX-technology
- > Patent pending pressure technology
- > 46 mm piston
- > PDS (Progressive Damping System)
- > Modular based
- > Wide range of springs



OH LINS.COM OH LINSRACING @OH LINSRACING OH LINSRACING

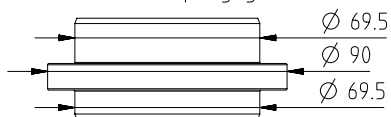
ÖHLINS RACING AB • Instrumentvägen 8-10 S-194 51 Upplands Väsby Sweden • +46 8 590 025 00 • info@ohlins.se



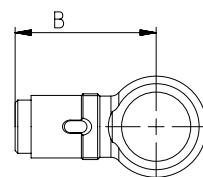
83	10037-07
30	10037-06
75	10037-05
19	10037-04
40	10037-03
42	10037-02
50	10037-01
A	Part#

Recommended helper springs	Recommended springs	Preload adjustment tool
05173-14	06772-XX	01796-01 (2x)
05173-16	06773-XX	
05713-17	06774-XX	

05193-08 Spring guide



75	01054-07
60	01054-09
53	01054-12
50	01054-16
B	Part#



258	626	170	536	190	ALR 0T73
220	550	170	459	160	ALR 0T72
197	500	150	410	135	ALR 0T71
Stroke	Length	Reservoir L	SL	SA	Part#

